

# FLOS

F3005061 White

## Glo-Ball Suspension 1

Designed by Jasper Morrison, 1998



Halogen - 150W

Suspension lamp providing diffused light. Diffuser consisting of an externally acid-etched, hand blown, flashed opaline glass. Gloss white painted pressed steel diffuser support. 30% fiberglass reinforced injection-molded polyamide rose; pressed and galvanized ceiling fitting. Steel suspension cable.

Are you a professional and your project needs consulting and support?

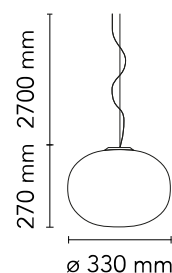
BOOK AN APPOINTMENT

### Main specifications

EAN	8059607002193
Mounting	Suspension
Environments	Indoor dry location
Light source type	Bulb
Light sources included	No
Lamp category	Halogen
Lamp holders	E27
Ilcos	HSGS
Number of lamps	1
Power (W)	150

### Physical

Colour	White
Length (mm)	330
Cord colour	Clear
Cord length (mm)	2700
Canopy colour	White
Canopy length/diameter (mm)	146
Canopy height (mm)	36
Net weight (kg)	2.55
Package volume (m3)	0.07
IP internal	20



### Download

Mounting instructions [↓ PDF](#)

### Photometric Files

LDT / IES [↓ LDT](#)

### Technical Drawings

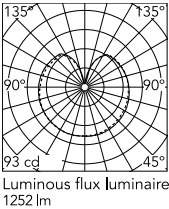
2D [↓ ZIP](#)

3D [↓ ZIP](#)

[Bim](#) [↓ ZIP](#)



Schematic light drawing



Photometric

Lighting type	Total
Light distribution	Roto symmetric
Extreme cut off	No

Electrical

Insulation class	I
Frequency (Hz)	50/60
Main voltage (Vac)	220-250
Dimmable	Yes
Dimming interface	Remote Dimmable (Dimmer Not Included)
Batteries inside	No

Bulbs



NOT INCLUDED

RF32288

LED Lamp E27 15W 2700K T38

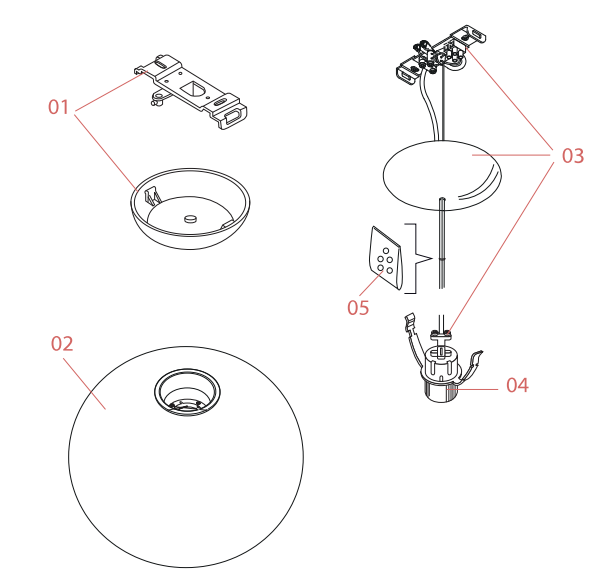


NOT INCLUDED

RF32289

LED Lamp E27 15W 3000K T38

Spare Parts



01.	White rose assembly	RA3690209
02.	Glo-Ball Suspension1 white diffuser	F3007061
03.	Glo-ball Suspension 1 electrical wiring assembly	F3006061A
04.	New version lamp holder	RF2500200
05.	Kit of 5 or rings	RF05382



RA3690209

White rose assembly



F3007061

Glo-Ball Suspension1 white  
diffuser



F3006061A

Glo-ball Suspension 1 electrical  
wiring assembly



RF2500200

New version lamp holder



RF05382

Kit of 5 or rings